

# Mini type 4 x E1 G.703 over fiber multiplexer



## ORDERING INFORMATION

### TELESCIENCE (SINGAPORE) PTE LTD

61 Kaki Bukit Avenue 1, #04-08, Shun Li Industrial Park, Singapore 417943

Tel: 6749 7878 Fax: 6749 4700

Email: [sales.sg@telescience.asia](mailto:sales.sg@telescience.asia)

## SPOTLIGHT

The **AN-FM-120-mini** family are special type unique design **mini** type fiber 4 x E1 modems available in a number of different models, with AC or DC power supplies built-in. The **AN-FM-120** family of modems may be applied in point-to-point applications or they may be installed and linked to a centrally located AN-CH01 or AN-CH03 chassis.

## DESCRIPTION

The **AN-FM-120** is a fiber media transport for 4 x G.703 E1 transmission. The BNC model provides unbalanced 75 Ohm coaxial connections while the RJ-45 model provides balanced 120 Ohm connections over twisted pair wiring.

All media converters are available with either multi-mode or single-mode optical transceivers and with connectors for SC, ST, or FC. In single mode they are available in up to 120 km versions reach, which will provide the ability to transmit and receive data using only a single optical fiber pair.

When the **AN-FM-120** is linked to the AN-CH03 with **AN-FM-120** card, it allows network engineers to get greater functionality through advanced SNMP features, the network administrator can manage any converter module from anywhere on the network, detect any link loss and maintain each loop.

## FEATURE

- Provide 4 E1/G.703 interface (120 BG telephone channel)
- Local device monitor remote device (2 row LEDs, upper indicate local status, lower indicate remote status)
- Provide function of 4 E1 remote loop, fiber local loop, and 1 interface of phone.
- Power supply option: AC220V, DC-48V, DC+24V (optional).
- Transmission distance: 2-120 Km
- Two fiber two direction and single fiber two direction (optional).
- Match telecom operation requirement, MTBF above 70,000 hours.
- High reliability, provide install type of 19 inch rack, desktop, hanging, and card.
- Special mini type casing design

## SPECIFICATION

### E1 interface parameter:

Channel capacity: 4 Channels  
Bit Rate: 2.048 Mb/s±50 ppm  
Line Code: HDB3  
Line Impedance: 120 Ohm / 75 Ohm  
Connector: RJ-45 or BNC  
Pulse Shape: ITU-T G.703  
Jitter Performance: ITU-T G.823

### Power:

DC: -48V (-36 to -72V); +24 V (Optional)  
AC: 90 to 260 VAC ; 47 ~ 63Hz  
Power Interface: DC power terminal/AC socket  
Power Consumption: 10 W maximum

### Optical interface parameter:

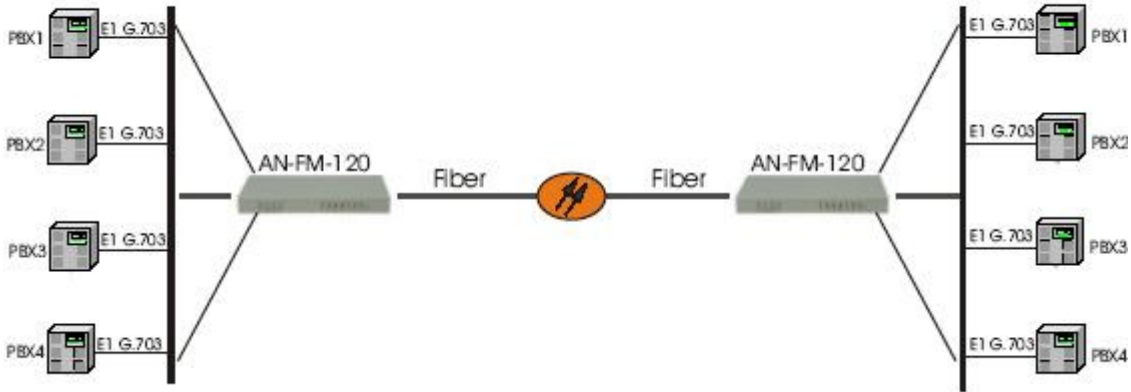
Optical wavelength: 850/1310nm for multi-mode fiber, 1310/1550nm for single-mode fiber  
Optical interface: SC/FC/ST (Optional)  
Transceiver module: > -6dBm  
Optical receiver sensitivity: <-36(BER<10)  
Receive range: >-30dB  
Transmission distance: multi-mode 2 Km, single-mode 20/ 40 / 80 / 120 Km, WDM versions available for any distances

### Working environment:

Operating temperature: 0 to 50°C  
Storage temperature: -20 to +70°C  
Relative humidity: 5% to 90% (25°C no condense)

# Mini type 4 x E1 G.703 over fiber multiplexer

Application scenario:



## Part Number

<b>AN-FM-120-MM-mini</b>	4xE1 signal over multi-mode fiber 2km SC/ST
<b>AN-FM-120-S20-mini</b>	4xE1 signal over single-mode fiber 20km SC/ST
<b>AN-FM-120-S40-mini</b>	4xE1 signal over single-mode fiber 40km SC/ST
<b>AN-FM-120-S80-mini</b>	4xE1 signal over single-mode fiber 80km SC/ST
<b>AN-FM-120-S120-mini</b>	4xE1 signal over single-mode fiber 120km SC/ST